

BT-8500

User Manual

03-2023 / V1.1

Edimax Technology Co., Ltd.

No. 278, Xinhua 1st Rd., Neihu Dist., Taipei City, Taiwan

Email: support@edimax.com.tw

Edimax Technology Europe B.V.

Fijenhof 2, 5652 AE Eindhoven, The Netherlands

Email: support@edimax.nl

Edimax Computer Company

530 Technology Drive Suite 100, Irvine, CA 92618, USA

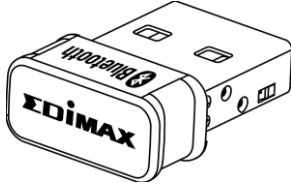
Email: support@edimax.us

Contents

<i>I.</i>	<i>Product Information</i>	<i>1</i>
I-1.	Package Contents	1
I-2.	Hardware Overview.....	1
I-3.	Supported System	1
<i>II.</i>	<i>Windows Plug-and-Play Installation</i>	<i>2</i>
II-1.	Insert the USB Adapter.....	2
II-2.	Bluetooth Plug-and-Play.....	2
II-3.	Pair with the Bluetooth Device.....	3
<i>III.</i>	<i>Windows Driver Installation.....</i>	<i>4</i>
III-1.	Insert the USB Adapter.....	4
III-2.	Download the Driver	4
III-3.	Pair with the Bluetooth Device.....	5
<i>IV.</i>	<i>Frequently Asked Question (FAQ)</i>	<i>8</i>
<i>V.</i>	<i>More Information</i>	<i>9</i>
<i>VI.</i>	<i>Safety Instructions</i>	<i>10</i>
<i>VII.</i>	<i>Simplified EU Declaration of Conformity</i>	<i>10</i>

I. Product Information

I-1. Package Contents



USB Adapter



Quick Installation Guide

I-2. Hardware Overview



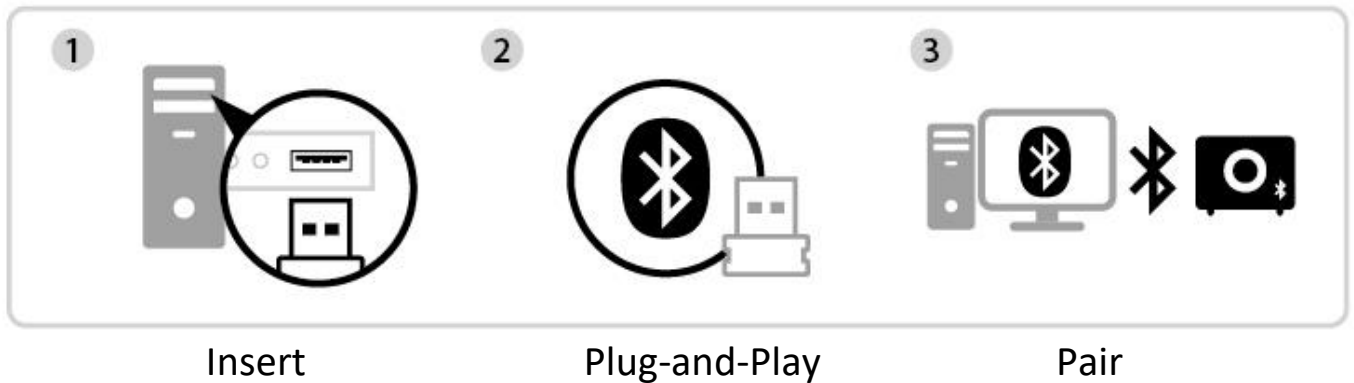
USB 2.0 Type A
Connector

I-3. Supported System

- Windows 8.1 / 10 / 11
- Linux

* Additional version information may be announced on the EDIMAX website.

II. Windows Plug-and-Play Installation



II-1. Insert the USB Adapter

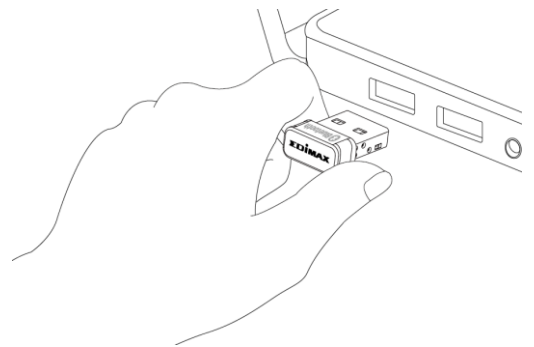
Insert the USB adapter into your computer and then switch on your computer.




Never use force to insert the USB adapter.



Please disable all the existing Bluetooth devices before inserting the device into your computer. (Refer to IV. FAQ -> Q1)



II-2. Bluetooth Plug-and-Play

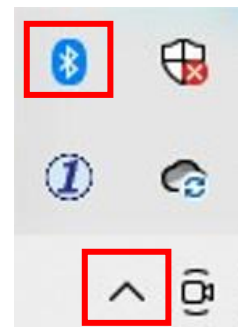
If your Windows OS supports Plug-and-Play, the Bluetooth icon  will be displayed on the bottom-right taskbar. (If Bluetooth icon doesn't display, please refer to IV. FAQ -> Q2)



Notice that if the Bluetooth icon does not show up, continue to click the arrow-up icon.

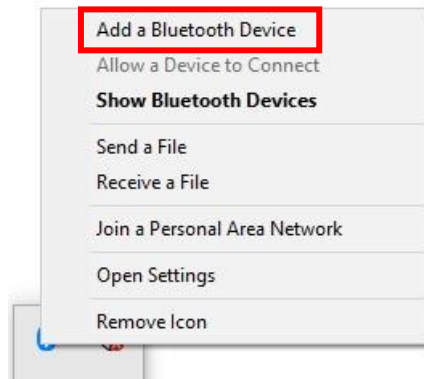


If your Operating System does not recognize the USB adapter, you need to install an additional driver on your computer. Please refer to "Section III".

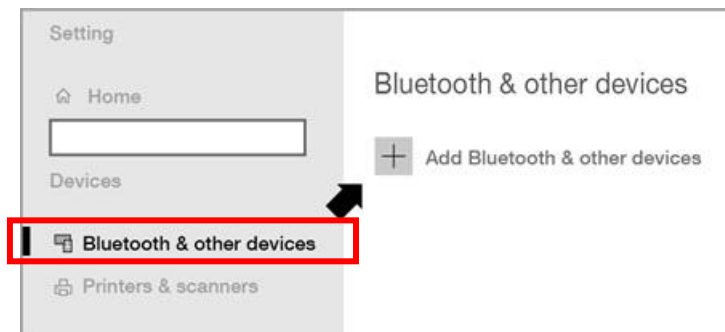


II-3. Pair with the Bluetooth Device

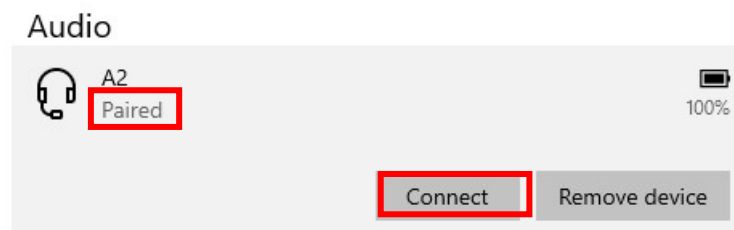
1. Click “Add a Bluetooth Device”.



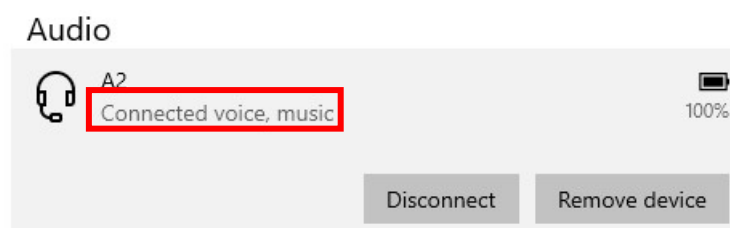
2. Select existing Bluetooth devices from the list or click “Bluetooth & other devices” to add an new Bluetooth device.



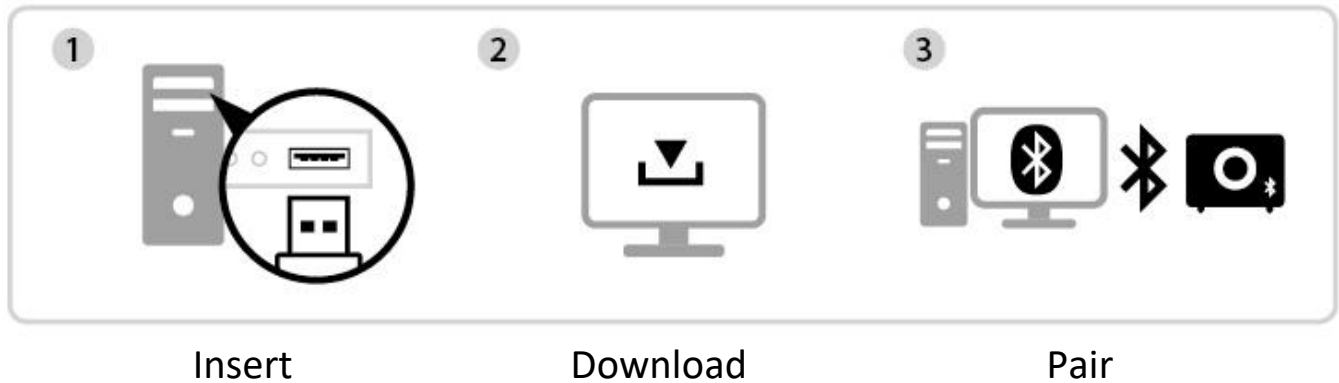
3. Select the Bluetooth device in “Paired” status you want to pair with and click “Connect”.



4. Once the status is “Connected”, the connection is established.



III. Windows Driver Installation



III-1. Insert the USB Adapter

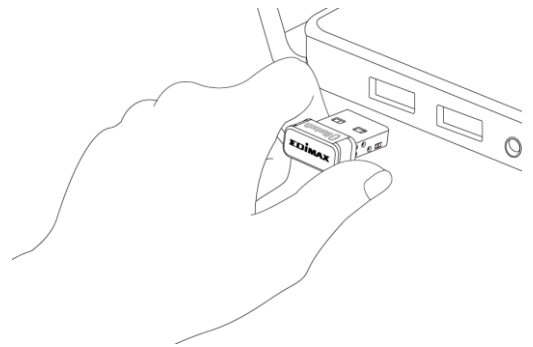
Insert the USB adapter into your computer and then switch on your computer.



Never use force to insert the USB adapter.



Please disable all the existing Bluetooth devices before inserting the device into your computer. (Refer to IV. FAQ -> Q1)




III-2. Download the Driver

1. You can find the USB adapter driver from the Edimax website.

<https://www.edimax.com/download>




If your computer can not access the Internet directly, please use an Internet-Enabled device to download the driver instead.



2. Enter the model number and click  to continue.

Download

To select your product and find related download materials, enter the model number into the search box on the right side or follow the simple steps below:

Model no. 
How do I find the model number?

3. Click on the model number.

1.   **Products > Home > Wireless Adapters > Bluetooth > BT-8500**
BT-8500
Bluetooth 5.0 Nano USB Adapter



Ensure the model number corresponds with your USB adapter.

4. Scroll down the web page and select the correct OS version. Move the cursor to the “Download icon” and save the driver on the computer desktop or a location you prefer.



Ensure you download the correct version.

Title	File Type	File Size	
BT-8500 Windows Bluetooth Driver 1.0.0.3 Support OS: Windows 8.1/10 (Version : 1.0.0.3) 2022-04-06	ZIP	73.66 MB	
BT-8500 Linux Bluetooth Driver 1.0.0.1 Support Kernel 2.6.32 - 5.3 (support Fedora & Ubuntu only) Languages: English (Version : 1.0.0.1) 2020-08-13	ZIP	2.48 MB	

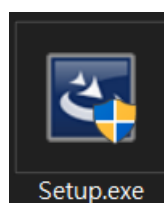


Copy the driver to the USB flash drive first if you downloaded the driver on another Internet-Enabled device and insert the USB flash drive to the computer you will use the USB adapter

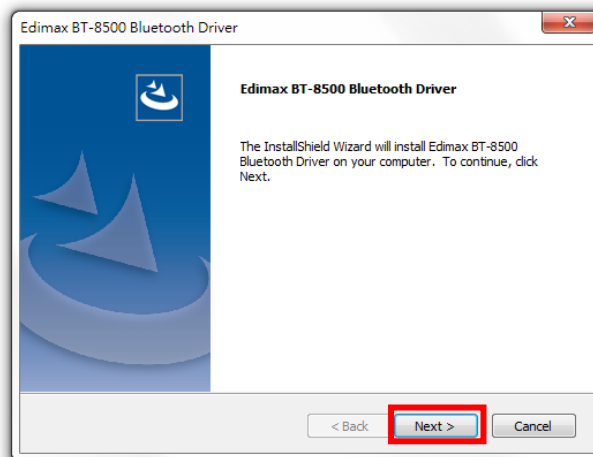
5. Move the cursor to the driver you just downloaded and extract the file.

III-3. Pair with the Bluetooth Device

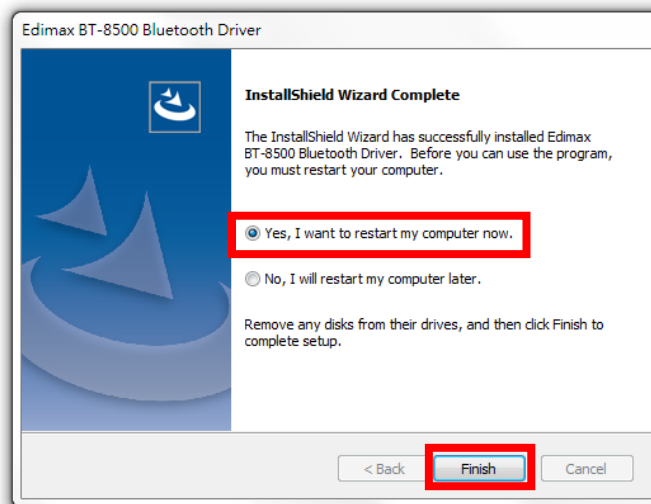
1. To install the Bluetooth, once it's uncompressed fully, access the folder “Bluetooth” and click “Setup.exe” to continue.




2. Click ick “**Next**” to continue and follow the instructions on-screen until installation is completed.



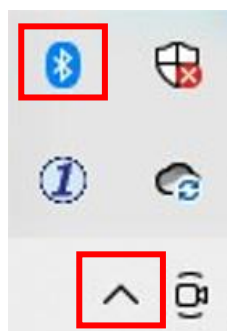
3. When the installation is completed, you will be asked to select whether you wish to restart your computer now or later. Select “**Yes**” and click “**Finish**” to continue.



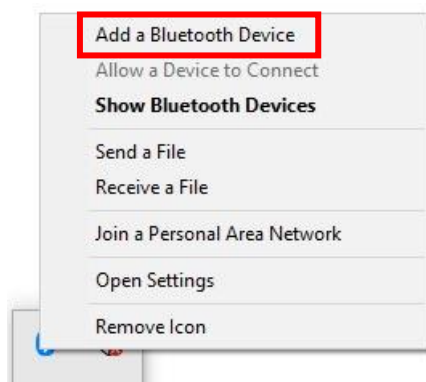
4. Click the Bluetooth icon  displayed on the bottom-right taskbar to pop up the menu. (If Bluetooth icon is not displayed, please refer to IV. FAQ -> Q2)



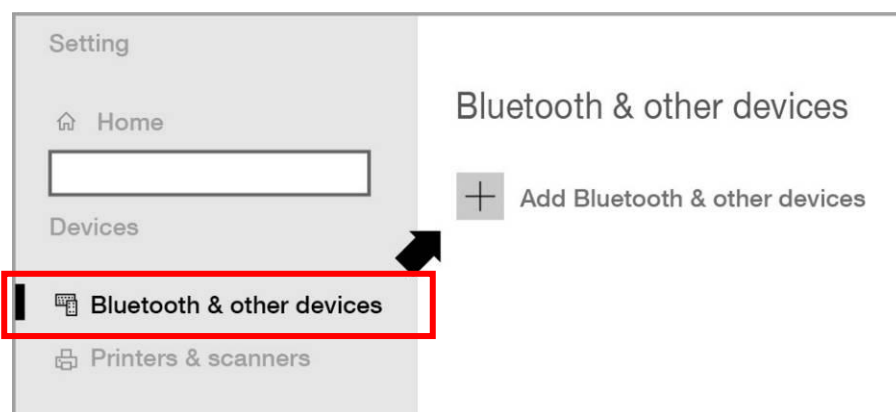
Notice that if the Bluetooth icon does not show up, click the arrow-up icon.



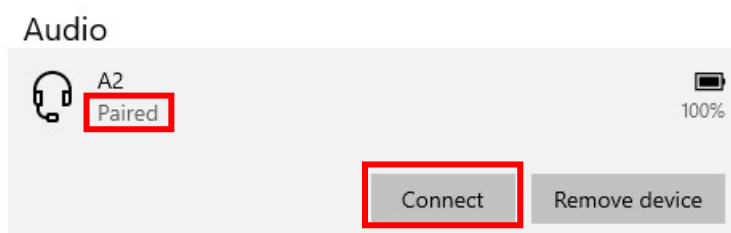
5. Click “Add a Bluetooth Device”.



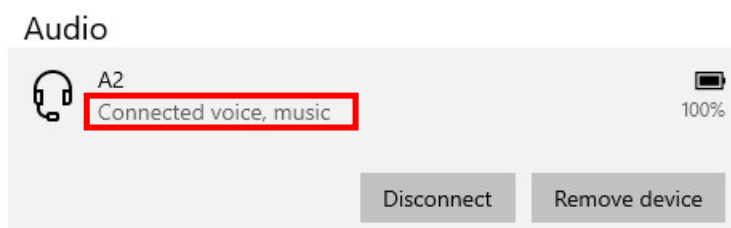
6. Select the existing Bluetooth devices from the list or click “Bluetooth & other devices” to add new Bluetooth devices.



7. Select the Bluetooth device in “Paired” status you want to pair with and click “Connect”.



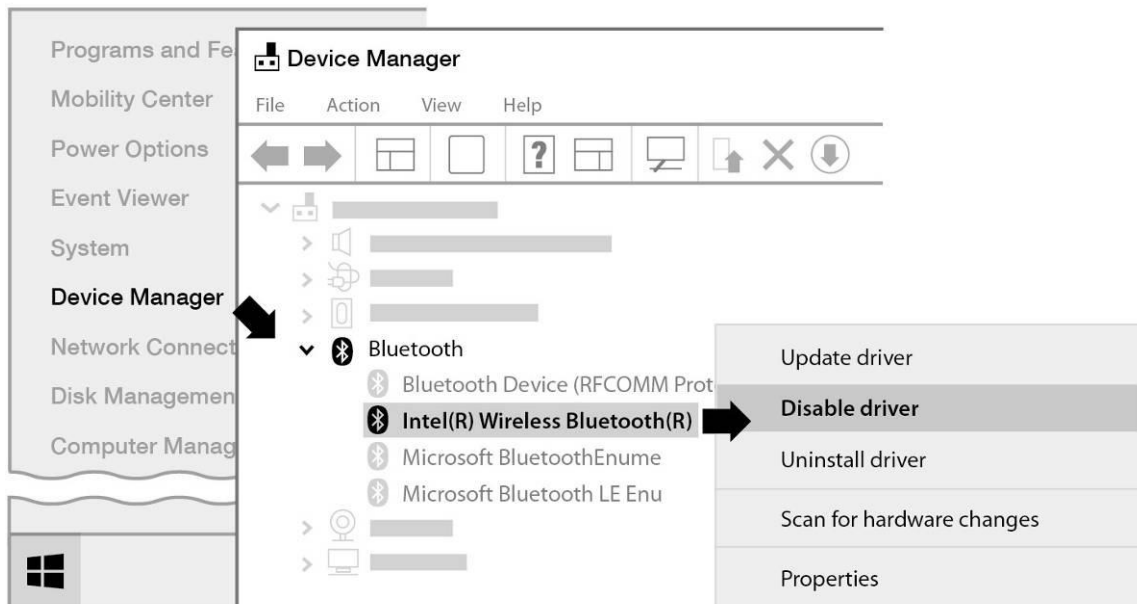
8. Once the status is “Connected”, the connection is established.





IV. Frequently Asked Question (FAQ)

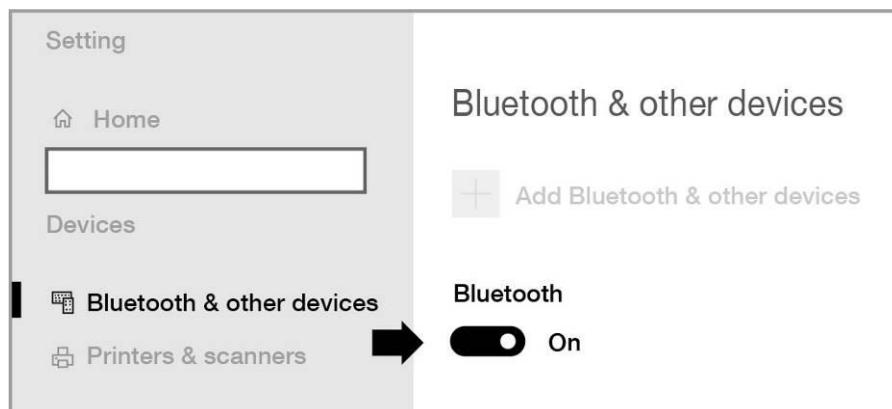
Q1. How to disable the existing Bluetooth device?

- A. Right-click the Windows **Start** button  , and select the “**Device Manager**”. Expand all the Bluetooth devices. Right-click on target device and disable the bluetooth device one by one.



Q2. Why doesn't the Bluetooth icon display on the Windows taskbar?

- A1. Click Windows **Start** button  , and click “**Setting**”  , select “**Device and other setting**”, and set the status as “**On**” to enable the Bluetooth service.



- A2. If the Bluetooth icon still doesn't appear, you may need to install the driver and try again. Please go to section III-2, to download and install the driver and try again.

V. More Information

For more information, please visit our website with the following URL or scan the QR code:

<https://www.edimax.com/download>



Please search the model number to enter the referred page.

Download

To select your product and find related download materials, enter the model number into the search box on the right side or follow the simple steps below:

*Feel free to contact us anytime if you need help or if you can't find your product.

A screenshot of a web search interface. It features a text input field with the placeholder text 'Model no.' and a magnifying glass icon on the right. Below the input field is a link that reads 'How do I find the model number?'. The entire search area is enclosed in a red rectangular border.

VI. Safety Instructions

The following general safety guidelines are provided to help ensure your own personal safety and protect your product from potential damage. Remember to consult the product user instructions for more details.

- This product is designed for indoor use only.
- Static electricity can be harmful to electronic components. Discharge static electricity from your body (i.e. touching grounded bare metal) before touching the product.
- The device contains no user serviceable parts. Do not attempt to service the product and never disassemble the product.
- Do not spill food or liquid on your product and never push any objects into the openings of your product.
- Do not use this product near water, areas with high humidity, or condensation.
- Keep the product away from radiators and other heat sources.
- This device is not designed to be operated by children.
- Always unplug the product from mains power before cleaning and use a dry lint free cloth only

VII. Simplified EU Declaration of Conformity

Hereby, Edimax Technology declares that the radio equipment type, Wi-Fi USB Adapter, is in compliance with Directive 2014/53/EU, 2014/35/EU.

The full text of the EU declaration of conformity is available at the following internet address:

<https://www.edimax.com/download/doc>



COPYRIGHT

Copyright © Edimax Technology Co., Ltd. all rights reserved. No part of this publication may be reproduced, transmitted, transcribed, stored in a retrieval system, or translated into any language or computer language, in any form or by any means, electronic, mechanical, magnetic, optical, chemical, manual or otherwise, without the prior written permission from Edimax Technology Co., Ltd.

Edimax Technology Co., Ltd. makes no representations or warranties, either expressed or implied, with respect to the contents hereof and specifically disclaims any warranties, merchantability, or fitness for any particular purpose. Any software described in this manual is sold or licensed as is. Should the programs prove defective following their purchase, the buyer (and not this company, its distributor, or its dealer) assumes the entire cost of all necessary servicing, repair, and any incidental or consequential damages resulting from any defect in the software. Edimax Technology Co., Ltd. reserves the right to revise this publication and to make changes from time to time in the contents hereof without the obligation to notify any person of such revision or changes.

The product you have purchased and the setup screen may appear slightly different from those shown in this QIG. The software and specifications are subject to change without notice. Please visit our website www.edimax.com for updates. All brand and product names mentioned in this manual are trademarks and/or registered trademarks of their respective holders.

Federal Communication Commission Interference Statement

This equipment has been tested and found to comply with the limits for a Class B digital device, pursuant to Part 15 of FCC Rules. These limits are designed to provide reasonable protection against harmful interference in a residential installation. This equipment generates, uses, and can radiate radio frequency energy and, if not installed and used in accordance with the instructions, may cause harmful interference to radio communications. However, there is no guarantee that interference will not occur in a particular installation. If this equipment does cause harmful interference to radio or television reception, which can be determined by turning the equipment off and on, the user is encouraged to try to correct the interference by one or more of the following measures:

1. Reorient or relocate the receiving antenna.
2. Increase the separation between the equipment and receiver.
3. Connect the equipment into an outlet on a circuit different from that to which the receiver is connected.
4. Consult the dealer or an experienced radio technician for help.

FCC Caution

This device and its antenna must not be co-located or operating in conjunction with any other antenna or transmitter. This device complies with Part 15 of the FCC Rules. Operation is subject to the following two conditions: (1) this device may not cause harmful interference, and (2) this device must accept any interference received, including interference that may cause undesired operation. Any changes or modifications not expressly approved by the party responsible for compliance could void the authority to operate equipment.

Federal Communications Commission (FCC) Radiation Exposure Statement

This equipment complies with FCC radiation exposure limits set forth for an uncontrolled environment. This equipment should be installed and operated with minimum distance 5mm between the radiator & your body.

RED Compliance Statement

Compliance with 2014/53/EU Radio Equipment Directive (RED)

In accordance with Article 10.8(a) and 10.8(b) of the RED, the following table provides information on the frequency bands used and the maximum RF transmit power of the product for sale in the EU:

Frequency range (MHz)	Max. Transmit Power (dBm)
2412-2472	9.97

A simplified DoC shall be provided as follows: Article 10(9)

Hereby, Edimax Technology Co., Ltd. declares that the radio equipment type **Bluetooth 5.0 USB Adapter** is in compliance with Directive 2014/53/EU

The full text of the EU declaration of conformity is available at the following internet address: <http://www.edimax.com/edimax/global/>

Safety

This equipment is designed with the utmost care for the safety of those who install and use it. However, special attention must be paid to the dangers of electric shock and static electricity when working with electrical equipment. All guidelines of this and of the computer manufacture must therefore be allowed at all times to ensure the safe use of the equipment.

EU Countries Intended for Use

The ETSI version of this device is intended for home and office use in Austria, Belgium, Bulgaria, Croatia, Cyprus, Czech, Denmark, Estonia, Finland, France, Germany, Greece, Hungary, Ireland, Italy, Latvia, Lithuania, Luxembourg, Malta, Netherlands, Poland, Portugal, Romania, Slovakia, Slovenia, Spain, Sweden, Turkey, and United Kingdom. The ETSI version of this device is also authorized for use in EFTA member states: Iceland, Liechtenstein, Norway, and Switzerland.

EU Countries Not Intended for Use

None

Canada Statement

This device complies with Industry Canada's licence-exempt RSSs. Operation is subject to the following two conditions:

- (1) This device may not cause interference; and
- (2) This device must accept any interference, including interference that may cause undesired operation of the device.

Le présent appareil est conforme aux CNR d'Industrie Canada applicables aux appareils radio exempts de licence. L'exploitation est autorisée aux deux conditions suivantes :

- (1) l'appareil ne doit pas produire de brouillage;
- (2) l'utilisateur de l'appareil doit accepter tout brouillage radioélectrique subi, même si le brouillage est susceptible d'en compromettre le fonctionnement.

The products are compliant with SAR for general population/uncontrolled exposure limits in IC RSS-102 and has been tested in accordance with the measurement methods and procedures specified in IEEE 1528. Maintain at least 0.5 centimeters distance for body-worn condition.

Le produit est le respect de SAR pour la population générale / limites d'exposition incontrôlée de CNR-102 et a été testé en conformité avec les méthodes et procédures de mesure spécifiées dans la norme IEEE 1528. Maintenir au moins 0.5 centimètres à distance pour la condition physique-garde.

This transmitter must not be co-located or operating in conjunction with any other antenna or transmitter. This equipment should be installed and operated with a minimum distance of 0.5 centimeters between the radiator and your body.

Cet émetteur ne doit pas être Co-placé ou ne fonctionnant en même temps qu'aucune autre antenne ou émetteur. Cet équipement devrait être installé et actionné avec une distance minimum de 0.5 centimètres entre le radiateur et votre corps.

CAN ICES-003 (B) / NMB-003 (B)

EU Declaration of Conformity

- English:** This equipment is in compliance with the essential requirements and other relevant provisions of Directive 2014/53/EU, 2014/35/EU.
- Français:** Cet équipement est conforme aux exigences essentielles et autres dispositions de la directive 2014/53/EU, 2014/35/EU.
- Čeština:** Toto zařízení je v souladu se základními požadavky a ostatními příslušnými ustanoveními směrnic 2014/53/EU, 2014/35/EU.
- Polski:** Urządzenie jest zgodne z ogólnymi wymaganiami oraz szczególnymi warunkami określonymi Dyrektywą UE 2014/53/EU, 2014/35/EU.
- Română:** Acest echipament este în conformitate cu cerințele esențiale și alte prevederi relevante ale Directivei 2014/53/UE, 2014/35/UE.
- Русский:** Это оборудование соответствует основным требованиям и положениям Директивы 2014/53/EU, 2014/35/EU.
- Magyar:** Ez a berendezés megfelel az alapvető követelményeknek és más vonatkozó irányelveknek (2014/53/EU, 2014/35/EU).
- Türkçe:** Bu cihaz 2014/53/EU, 2014/35/EU direktifleri zorunlu istekler ve diğer hükümlerle ile uyumludur.
- Українська:** Обладнання відповідає вимогам і умовам директиви 2014/53/EU, 2014/35/EU.
- Slovenčina:** Toto zariadenie spĺňa základné požiadavky a ďalšie príslušné ustanovenia smerníc 2014/53/EU, 2014/35/EU.
- Deutsch:** Dieses Gerät erfüllt die Voraussetzungen gemäß den Richtlinien 2014/53/EU, 2014/35/EU.
- Español:** El presente equipo cumple los requisitos esenciales de la Directiva 2014/53/EU, 2014/35/EU.
- Italiano:** Questo apparecchio è conforme ai requisiti essenziali e alle altre disposizioni applicabili della Direttiva 2014/53/EU, 2014/35/UE.
- Nederlands:** Dit apparaat voldoet aan de essentiële eisen en andere van toepassing zijnde bepalingen van richtlijn 2014/53/EU, 2014/35/EU.
- Português:** Este equipamento cumpre os requisitos essenciais da Directiva 2014/53/EU, 2014/35/EU.
- Norsk:** Dette utstyret er i samsvar med de viktigste kravene og andre relevante regler i Direktiv 2014/53/EU, 2014/35/EU.
- Svenska:** Denna utrustning är i överensstämmelse med de väsentliga kraven och övriga relevanta bestämmelser i direktiv 2014/53/EU, 2014/35/EU.
- Dansk:** Dette udstyr er i overensstemmelse med de væsentligste krav og andre relevante forordninger i direktiv 2014/53/EU, 2014/35/EU.
- suomen kieli:** Tämä laite täyttää direktiivien 2014/53/EU, 2014/35/EU. oleelliset vaatimukset ja muut asiaankuuluvat määräykset.

FOR USE IN

AT	BE	BG	CZ	DK	DE
EE	IE	EL	ES	FR	HR
IT	CY	LV	LT		
LU	HU	MT	NL	PL	PT
RO	SI	SK	FI		
SE	UK	UK(NI)	TR	IS	LI
NO	CH	RU	UA		



WEEE Directive & Product Disposal



At the end of its serviceable life, this product should not be treated as household or general waste. It should be handed over to the applicable collection point for the recycling of electrical and electronic equipment, or returned to the supplier for disposal.

Declaration of Conformity

We, Edimax Technology Co., Ltd., declare under our sole responsibility, that the equipment described below complies with the requirements of the European Radio Equipment directives.

Equipment: Bluetooth 5.0 USB Adapter

Model No.: BT-8500

The following European standards for essential requirements have been followed:

Directives 2014/53/EU

Spectrum : EN 300 328 V2.2.2 (2019-07)

EMC : EN 301 489-1 V2.2.3 (2019-11) Class B
EN 301 489-17 V3.2.4 (2020-09)

EMF : EN 62479:2010 and EN 50663:2017

Safety (LVD) : IEC 62368-1:2018 and/or EN IEC 62368-1:2020+A11:2020

Edimax Technology Europe B.V.

Fijenhof 2,

5652 AE Eindhoven,

The Netherlands

Date & Place of Issue: 31/March/2023, Eindhoven

Signature:



Printed Name: David Huang

Title: Director

a company of:

Edimax Technology Co., Ltd.

No. 278, Xinhua 1st Rd., Neihu Dist.,

Taipei City, Taiwan

Date & Place of Issue: 31/March/2023, Taipei

Signature:



Printed Name: Hunter Chen

Title: Director



Declaration of Conformity

We, Edimax Technology Co., Ltd., declare under our sole responsibility, that the equipment described below complies with the requirements of the United Kingdom Radio Equipment directives.

Equipment: Bluetooth 5.0 USB Adapter
Model No.: BT-8500

The following European standards for essential requirements have been followed:

Radio Equipment Regulations 2017 (S.I. 2017/1206)

Spectrum : EN 300 328 V2.2.2 (2019-07)
EMC : EN 301 489-1 V2.2.3 (2019-11) Class B
EN 301 489-17 V3.2.4 (2020-09)
EMF : EN 62479:2010 and EN 50663:2017
Safety (LVD) : IEC 62368-1:2018 and/or EN IEC 62368-1:2020+A11:2020

Edimax Technology Europe B.V.

Fijenhof 2,

5652 AE Eindhoven,

The Netherlands

Date & Place of Issue: 31/March/2023, Eindhoven

Signature:



Printed Name: David Huang

Title: Director

a company of:

Edimax Technology Co., Ltd.

No. 278, Xinhua 1st Rd., Neihu Dist.,

Taipei City, Taiwan

Date & Place of Issue: 31/March/2023, Taipei

Signature:



Printed Name: Hunter Chen

Title: Director

